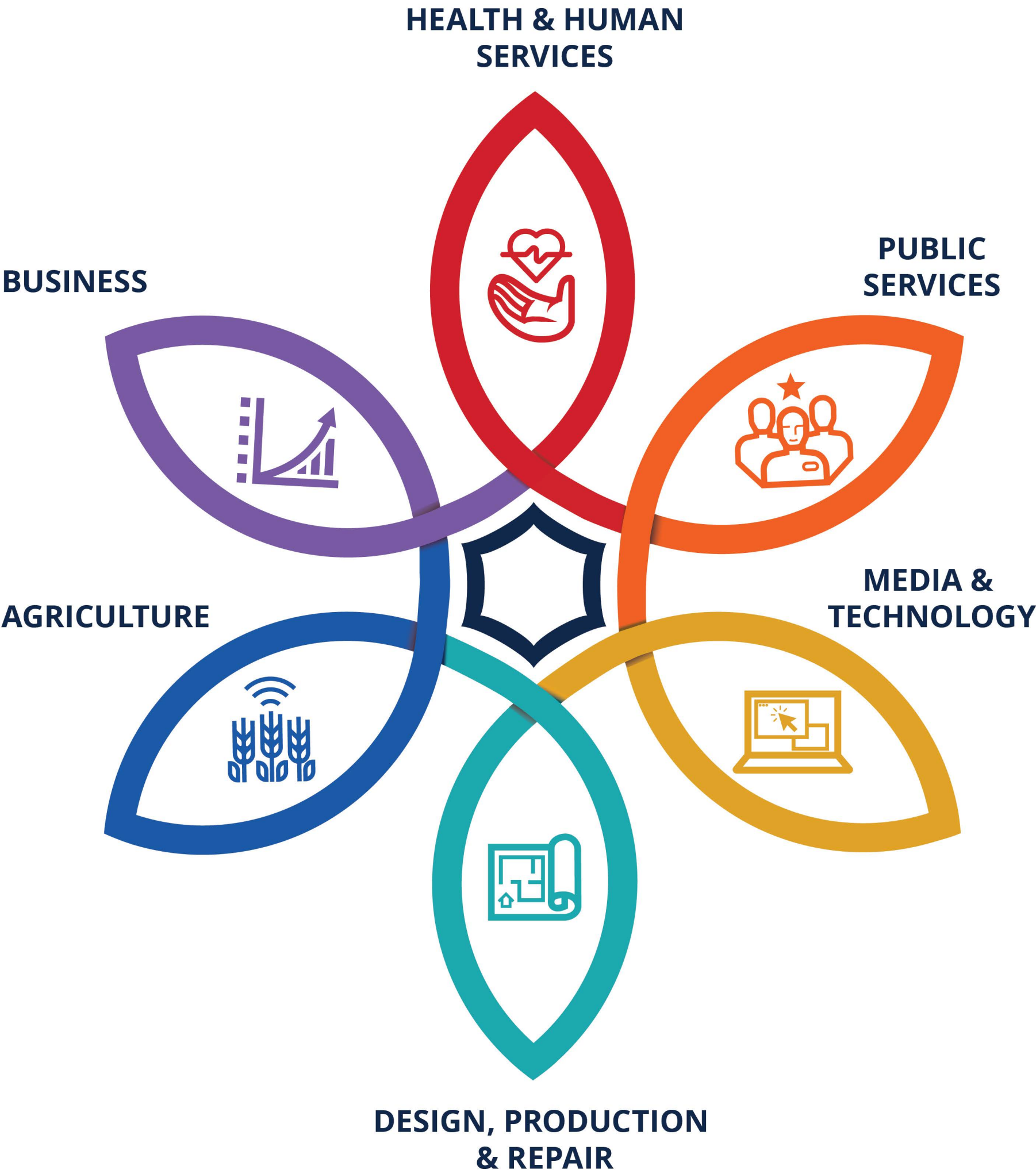


# Kansas Careers

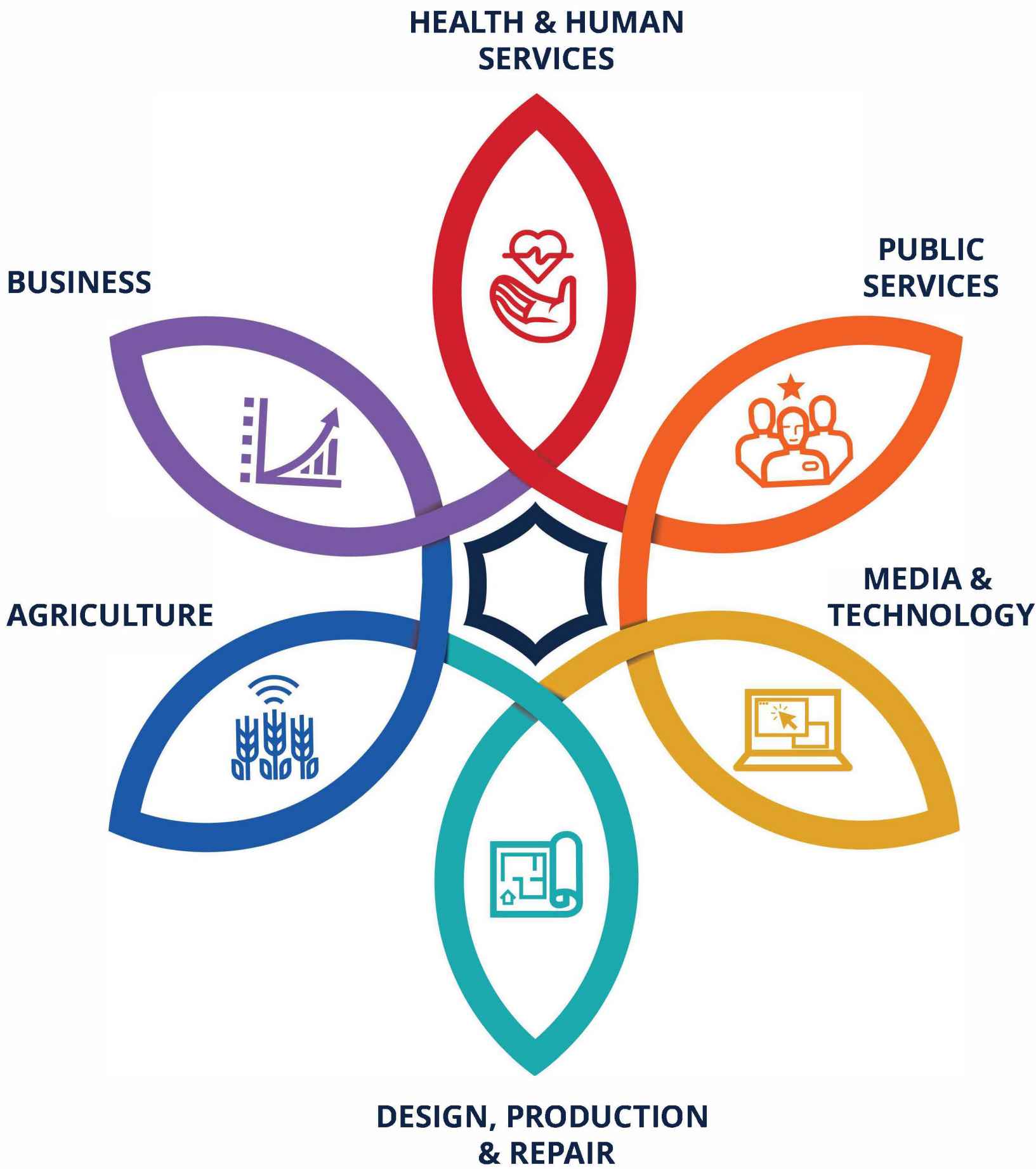
INDUSTRIES | CLUSTERS | PATHWAYS



Workplace Skills, Applied Knowledge and Effective Relationships are at the heart of all **Employability Skills**.

# Kansas Careers

INDUSTRIES | CLUSTERS | PATHWAYS



Workplace Skills, Applied Knowledge and Effective Relationships are at the heart of all **Employability Skills**.

● **HEALTH & HUMAN SERVICES**  
*Healthcare & Human Services*

● **MEDIA & TECHNOLOGY**  
*Digital Technology*

● **AGRICULTURE**  
*Agriculture  
Energy & Natural Resources*

● **PUBLIC SERVICES**  
*Education  
Public Service & Safety*

● **DESIGN, PRODUCTION & REPAIR**  
*Advanced Manufacturing  
Construction  
Supply Chain & Transportation*

● **BUSINESS**  
*Financial Services  
Hospitality & Tourism  
Management & Entrepreneurship  
Marketing & Sales*



*Kansas leads the world in the success of each student.*

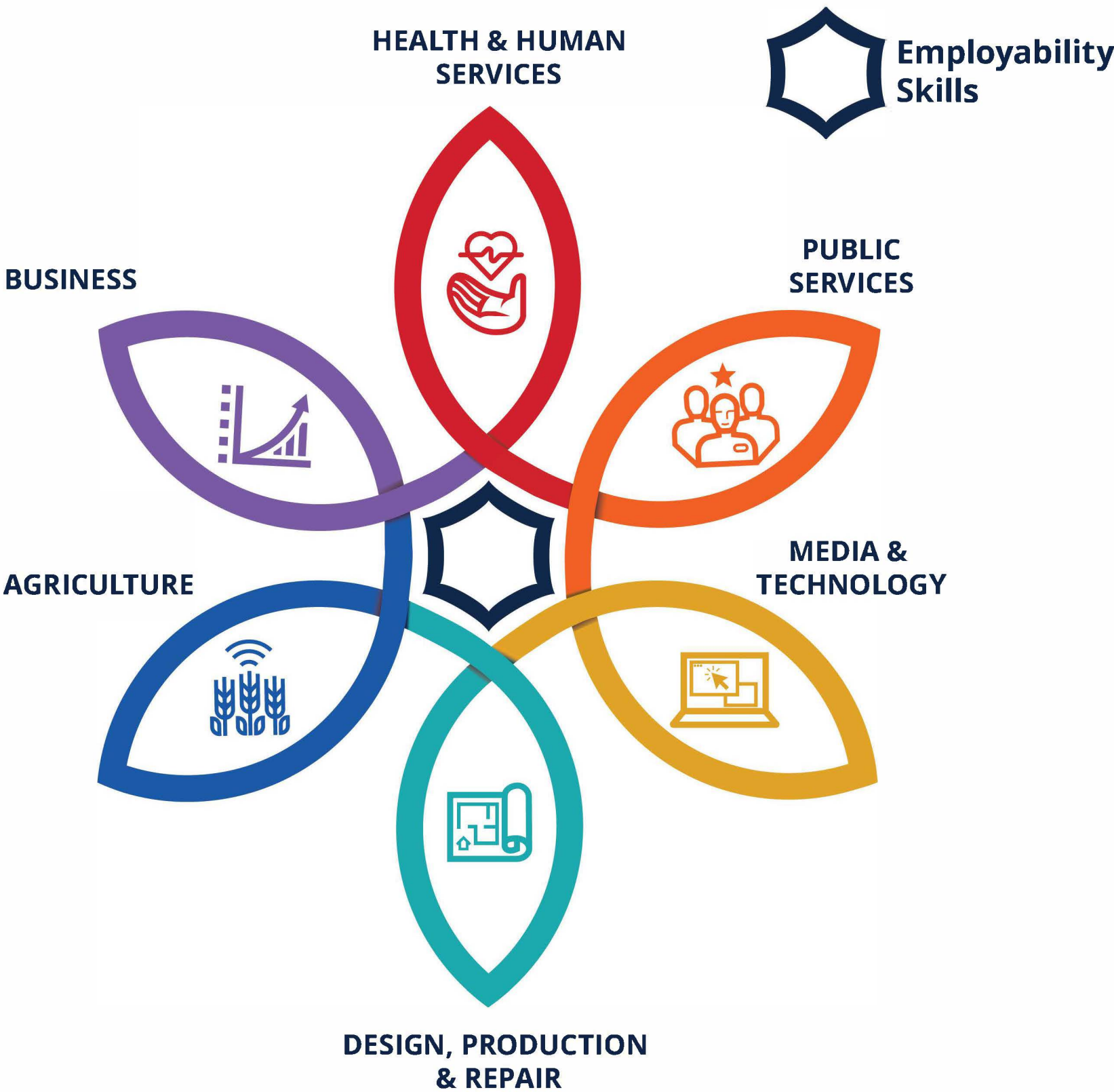
Kansas State Department of Education | [www.ksde.org](http://www.ksde.org) | [#KansansCan](https://twitter.com/KansansCan)

The Kansas State Department of Education does not discriminate on the basis of race, color, national origin, sex, disability or age in its programs and activities and provides equal access to the Boy Scouts and other designated youth groups. The following person has been designated to handle inquiries regarding the nondiscrimination policies: KSDE General Counsel, Office of General Counsel, KSDE, Landon State Office Building, 900 S.W. Jackson, Suite 102, Topeka, KS 66612, (785) 296-3201.



# Kansas Careers

INDUSTRIES | CLUSTERS | PATHWAYS



- HEALTH & HUMAN SERVICES**  
*Healthcare & Human Services*

  - Biotechnology
  - Family, Community & Consumer Services
  - Health Science
- MEDIA & TECHNOLOGY**  
*Digital Technology*

  - Information Support & Services
  - Media Design & Communications
  - Networking & Telecommunications
  - Programming & Software Development
- AGRICULTURE**  
*Agriculture*

  - Agricultural Technology & Mechanical Systems
  - Animal Science, Health, & Related Industries
  - Diversified Agricultural Science
  - Food Products & Processing Systems
  - Plant Science & Industry Operations

*Energy & Natural Resources*

  - Energy
  - Natural Resources & Environmental Sustainability
- PUBLIC SERVICES**  
*Education*

  - Early Childhood Development & Services
  - Teaching / Training

*Public Service & Safety*

  - Corrections, Security, Law, & Law Enforcement Services
  - Emergency & Fire Management Services
  - Government & Public Administration
- DESIGN, PRODUCTION & REPAIR**  
*Advanced Manufacturing*

  - Automation Engineering
  - Aviation Production
  - Engineering & Applied Mathematics
  - Manufacturing

*Construction*

  - Construction & Design

*Supply Chain & Transportation*

  - Aviation Maintenance & Operations
  - Vehicle Maintenance & Repair
- BUSINESS**  
*Financial Services*

  - Business Finance

*Hospitality & Tourism*

  - Restaurant & Event Management
  - Travel & Tourism

*Management & Entrepreneurship*

  - Business Management & Entrepreneurship

*Marketing & Sales*

  - Marketing